

ADVANCING AND STRENGTHENING
SOCIAL ENTERPRISES TO MAXIMIZE
THEIR IMPACT IN THE ECONOMIC
AND SOCIAL SECTOR OF CENTRAL
EUROPEAN COUNTRIES

WHAT WE DO

From the 1 st of June 2017
10 Central European partner
organizations implement a
transnational project aimed
at developing and testing tools
and methods for helping social
enterprises for 3 years.
What makes social enterprise viable?
How can people who are living in
underprivileged regions and don't
have a job get one? SENTINEL
partnership is looking for answers
in 6 Middle-European countries.



160.000
SOCIAL
ENTERPRISES



5,4 million
JOBS IN THE
EUROPEAN UNION

Nearly
50.000-60.000
social enterprises
and cooperatives
in the Central
European region

6
COUNTRIES

10
PROJECT
PARTNERS

1.95
MILLION EURO
PROJECT BUDGET

1.63
MILLION EURO
ERDF

TAKING
COOPERATION
FORWARD

WHO WE ARE

Partners from six Central European countries join
their forces to mentor, help and strengthen social
enterprises.

Czech Republic

- Institute of Social Innovations -
www.ceemproject.eu/about-partners/institute-of-social-innovations-usi/

Germany

- Social Impact GmbH - www.socialimpact.eu

Hungary

- Hungarian Charity Service of the Order of Malta -
www.maltai.hu
- KONETT Hungaria Community Development Non-
profit Ltd - www.konett.org

Italy

- Trentino federation of cooperation -
www.cooperazionetrentina.it/
- Central European Initiative -
www.cei.int/Institution

Poland

- Rzeszow Regional Development Agency -
www.rarr.rzeszow.pl/en
- Regional Centre of Social Assistance in Rzeszow -
www.rops.rzeszow.pl

Slovenia

- Foundation for Social Investment -
www.sklad05.si
- Foundation for Improvement of Employment
Possibilities PRIZMA, an Institution -
www.fundacija-prizma.si/index.php/en

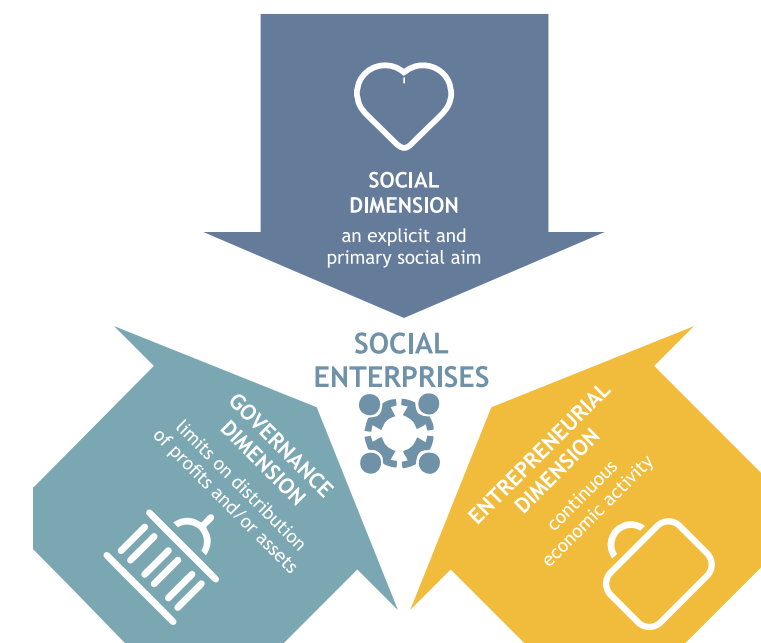
The main objective of SENTINEL is to help these
enterprises to be real drivers of social inclusion and
work integration in Central Europe. The partnership
is testing new operating models and mentoring
services designed to strengthen social enterprises
in less developed regions. At the same time
innovative methods are developed to facilitate the
networking and cooperation of these organisations.

Who funds us

Our project is funded by the Interreg CENTRAL
EUROPE Programme that encourages cooperation
on shared challenges in central Europe.

With 1.628.325, 13 Euro of funding from the
European Regional Development Fund,
the programme supports institutions to work
together beyond borders to improve social
enterprises and regions in the Czech Republic,
Germany, Hungary, Italy, Poland and Slovenia.

The three dimensions of a social enterprise



DISCOVER MORE ABOUT
SENTINEL

www.interreg-central.eu/sentinel

“Continue to be the motor that lifts and develops
the weakest part of your local community and
of civil society, especially by establishing
companies to provide jobs; be leaders in creating
new welfare solutions, as you are already doing.
Participate actively in globalization in order
to integrate - in the world - development, justice
and peace.”- said Pope Francis in 2015 at
the Confederation of Italian Cooperatives.

Contact Us

SENTINEL
Hungarian Charity Service of the Order of Malta

+36 30 651 7244

meszaros.eszter@maltai.hu

www.facebook.com/CentralEuropeSentinel



ADVANCING AND STRENGTHENING SOCIAL ENTERPRISES TO MAXIMIZE THEIR IMPACT IN THE ECONOMIC AND SOCIAL SECTOR OF CENTRAL EUROPEAN COUNTRIES



Outputs

Although the founders and executives of social enterprises are ready to take the risk, they often lack managerial and professional skills; therefore, one of the important aims of the project is the improvement of managerial competences and entrepreneurial mind-sets.

One of the key objectives of the project is to create new jobs and to make more and more people in the participating countries familiar with the work of social enterprises. Be social and buy social, that is one of the most important messages in support of these enterprises.

Social enterprises are important employers in the disadvantaged regions in Central Europe, so their financial sustainability needs to be increased by popularization. Supporting social enterprises will be a brave, creative, and innovative action that leads to systematic changes. It is a real mission that strikes the existing social framework and will have a positive impact on the economy of the disadvantaged regions.

In addition, SENTINEL undertakes to link and promote communication between the social enterprises of the project. The aim is to share their ideas and experiences as quickly and easily as possible.



TRANSNATIONAL COOPERATION - CHALLENGES

There is no part of Europe that cannot benefit from social entrepreneurship; that is why the EU calls for coordinated actions in this field in its EESC Recommendations on Social Enterprise and in the Social Business Initiative. SENTINEL's partnership has identified challenges common to all of them, prompting joint action in skill development, support and mentoring and networking of SEs emerging or operating in disadvantaged regions of Central Europe. The partnership of SENTINEL will be working together throughout the project to develop joint solutions meeting their regional needs and potentials.

The aim of SENTINEL is not solely to mentor and empower social enterprises. Besides supporting SEs, SENTINEL pays particular attention to linking and boosting communication among all ten associated partners.



INTRODUCING SOME OF THE SOCIAL ENTERPRISES AND COOPERATIVES INVOLVED IN SENTINEL



Electronic Device Managing Factory

One of the Hungarian social enterprises mentored by the lead partner, Pécs Electronic Device Managing Factory provides work rehabilitation help for twenty of our underprivileged companions. Employees perform recycling of used electronic devices. The REkreacio jewellery collection was created in harmony with this philosophy. Mentor and jewellery maker Krisztina Révai dreamt a new life into different secondary raw materials, creating jewels out of them.



Hetedhét Határ Social Cooperative

Gyulaj is a village in Hungary with a thousand inhabitants. The problems of Gyulaj are caused by unemployment, lack of qualifications, and incapability for work. Gyulaj - with the useful help of the Hungarian Charity Service of the Order of Málta - realised that creative work is not sufficient, and social development is not enough to develop the local community. Entrepreneurship is essential for creating an economic network in favour of the local society.





Rymanów Zdrój

The “Professional Activity Establishment Rymanów Zdrój” conducts hotel and gastronomic activities, production of delicatessen and gardening services. It also has its own restaurant called “Our hut and a newly established bakery „ZazSmak” in Rymanów in Poland. They have altogether 102 employees, most of whom are disabled people.



Polyphony Project

Social Cooperative “Polyphony Project” in Rzeszow runs “Vinyl Club” - a social and cultural meeting point. Polyphony Project activity is focused on organizing events aimed at adults who prefer different types of music. In the club you can play darts and many other social games.



Kooperativa Dame - Cooperative Dame

Four ladies (50+) who have been unemployed over the years due to various circumstances joined forces at the beginning of 2014 and set up the social enterprise Kooperativa Dame. Their business idea is based on the development of sustainable hospitality and tourism. Today they run a restaurant named »Pri Damah« and the »Minoritska kavarnica« café in a puppet theatre, offer catering, prepare responsible business gifts, etc.



Ironing ladies

There are many women in our society who are disadvantaged on the labor market for various reasons. They have sick or disabled children and thus they may work only at home. These women are looking for an incentive to improve their life situation a little bit. The project “Ironing ladies” is looking for such women and tries to find an employment for them in an area they are experienced and know well.



Društvo Aktiviraj

The association deals with the development of social projects and the promotion of social entrepreneurship, to activate the individuals and strengthen and develop the ideas of civil initiatives. It implements non-formal education programs and intergenerational cooperation through its main projects: Ropotarnica - re-use centre, Recycling Lab - innovative green products and community garden, organised in the city centre.

